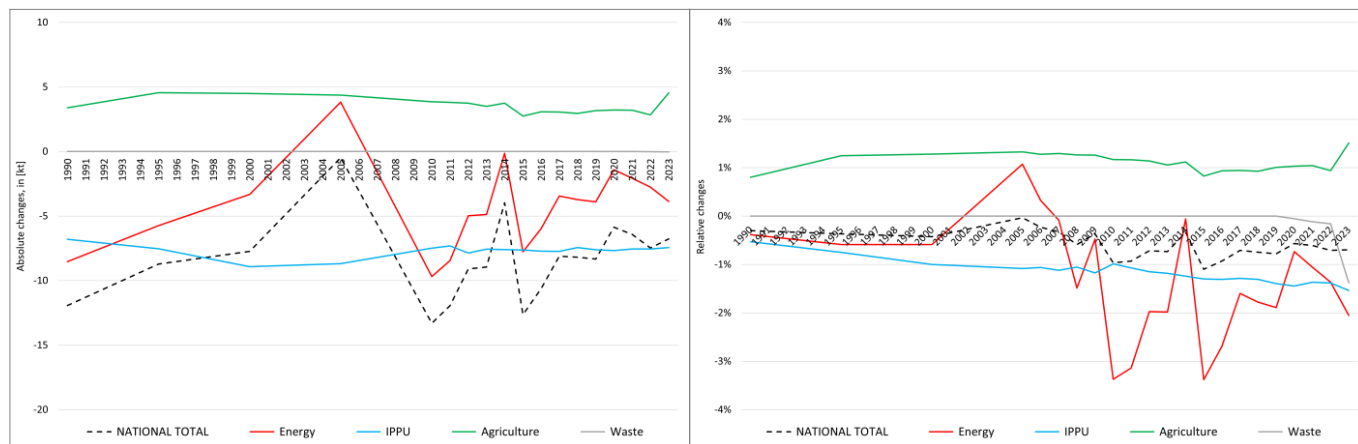


pollutant-specific data:	NOx	NM VOC	SOx	NH3	PM2.5	PM10	TSP	BC	CO	Pb	Cd	Hg	As	Cr	Cu	Ni	Se	Zn	PCDD/F	B[a]P	B[b]F	B[k]F	I[x]P	PAH1-4	HCB	PCB
--------------------------	-----	--------	-----	-----	-------	------	-----	----	----	----	----	----	----	----	----	----	----	----	--------	-------	-------	-------	-------	--------	-----	-----

Recalculations - Non-Methane Volatile Organic Compounds



The changes within the **National Total** reported for **1990 (-12 kt or -0.30 %)** are dominated by three revisions in NFR sub-categories **1.B.2.a v** (-8.52 kt), **2.B.10.b** (-6.80 kt) and **3.B.1.a** (+3.39 kt), with the strongest percental change occurring for **2.B.10.b with minus 84 %**.

Table 1: Changes in emission estimates for 1990

NFR Sector	Submission 2025	Submission 2026	Difference		Reasoning
	[kt]		absolute	relative	
NATIONAL TOTAL	3,953.69	3,941.76	-11.93	-0.30%	see description and reasoning in: sub-category chapters
NFR 1 - Energy	2,220.86	2,212.34	-8.52	-0.38%	sub-category chapters
1.A.2.g vii	7.15001	7.15003	0.00002	0.0003%	here
1.A.4.a ii	2.0624	2.0619	-0.0004	-0.02%	here
1.A.4.c ii	34.986	34.985	-0.001	-0.004%	here
1.B.2.a v	88.91	80.39	<u>-8.52</u>	-9.58%	
NFR 2 - IPPU	1,291.63	1,284.83	-6.80	-0.53%	sub-category chapters
2.B.10.b	8.09	1.29	<u>-6.80</u>	<u>-84.05%</u>	here
NFR 3 - Agriculture	422.91	426.31	3.39	0.80%	sub-category chapters
3.B.1.a	205.77	209.16	<u>3.39</u>	1.65%	here
NFR 5 - Waste	18.28	18.28	0.00	0.00%	
NFR 6 - Other		NA			

The changes within the **National Total** reported for **2023 (-6.77 kt or -0.69 %)** are dominated by revisions in NFR sub-categories **1.A.4.c ii** (-2.85 kt), **2.B.10.b** (-7.41 kt) and **3.B.1.a** (+4.80 kt) with the strongest percental change occurring for **2.B.10.b with minus 92 %**.

Table 2: Changes in emission estimates for 2023

NFR Sector	Submission 2025	Submission 2026	Difference		Reasoning
	[kt]		absolute	relative	
NATIONAL TOTAL	974.82	968.05	-6.77	-0.69%	see description and reasoning in: sub-category chapters
NFR 1 - Energy	188.48	184.61	-3.87	-2.05%	sub-category chapters
1.A.1.a	6.03	6.26	0.23	3.79%	here
1.A.1.b	0.90	0.87	-0.02	-2.61%	here
1.A.1.c	0.32	0.34	0.02	6.08%	here

	Submission 2025	Submission 2026	Difference		Reasoning
NFR Sector	[kt]			relative	see description and reasoning in:
NATIONAL TOTAL	974.82	968.05	-6.77	-0.69%	sub-category chapters
NFR 1 - Energy	188.48	184.61	-3.87	-2.05%	sub-category chapters
1.A.2.a	0.245	0.247	0.003	1.16%	here
1.A.2.b	0.077	0.075	-0.001	-1.71%	here
1.A.2.e	0.028	0.023	-0.005	-18.10%	here
1.A.2.g vii	4.00	3.23	-0.78	-19.45%	here
1.A.2.g viii	5.28	5.21	-0.07	-1.24%	here
1.A.3.a ii(i)	0.2184	0.2188	0.0003	0.15%	here
1.A.3.b i	40.95	40.90	-0.04	-0.10%	here
1.A.3.b ii	1.41	1.40	-0.01	-1.02%	here
1.A.3.b iii	1.990	1.991	0.001	0.04%	here
1.A.3.b iv	11.75	11.65	-0.10	-0.83%	here
1.A.3.b v	24.84	24.62	-0.22	-0.88%	here
1.A.3.c	0.3666	0.3666	0.0001	0.01%	here
1.A.3.d ii	1.47	1.44	-0.03	-2.08%	here
1.A.4.a i	3.80	3.70	-0.09	-2.48%	here
1.A.4.a ii	0.576	0.624	0.05	8.22%	here
1.A.4.b i	32.00	31.90	-0.10	-0.31%	here
1.A.4.b ii	7.849	7.470	-0.38	-4.83%	here
1.A.4.c i	0.833	0.831	-0.001	-0.15%	here
1.A.4.c ii	13.23	10.38	-2.85	-21.58%	here
1.A.5.a	0.08	0.09	0.01	6.79%	here
1.A.5.b	1.46	1.49	0.03	2.12%	here
1.B.2.a i	5.27	5.28	0.01	0.15%	
1.B.2.a iv	2.938	2.936	-0.002	-0.05%	
1.B.2.a v	16.79	17.32	0.53	3.15%	
1.B.2.b	2.25	2.22	-0.03	-1.14%	
1.B.2.c	0.292	0.288	-0.003	-1.18%	
NFR 2 - IPPU	483.32	475.89	-7.43	-1.54%	sub-category chapters
2.A.3	0.434	0.431	-0.003	-0.69%	here
2.B.10.b	8.04	0.63	-7.41	-92.12%	here
2.I	3.65	3.64	-0.02	-0.46%	here
NFR 3 - Agriculture	301.35	305.89	4.55	1.51%	sub-category chapters
3.B.1.a	161.23	166.02	4.80	2.97%	here
3.B.1.b	84.87	84.63	-0.25	-0.29%	here
3.B.4.h	0.0404	0.0402	-0.0002	-0.59%	here
NFR 5 - Waste	1.68	1.65	-0.02	-1.38%	sub-category chapters
5.A	1.056	1.037	-0.02	-1.84%	here
5.D.1	0.13	0.12	0.00	-2.97%	here
NFR 6 - Other		NA			