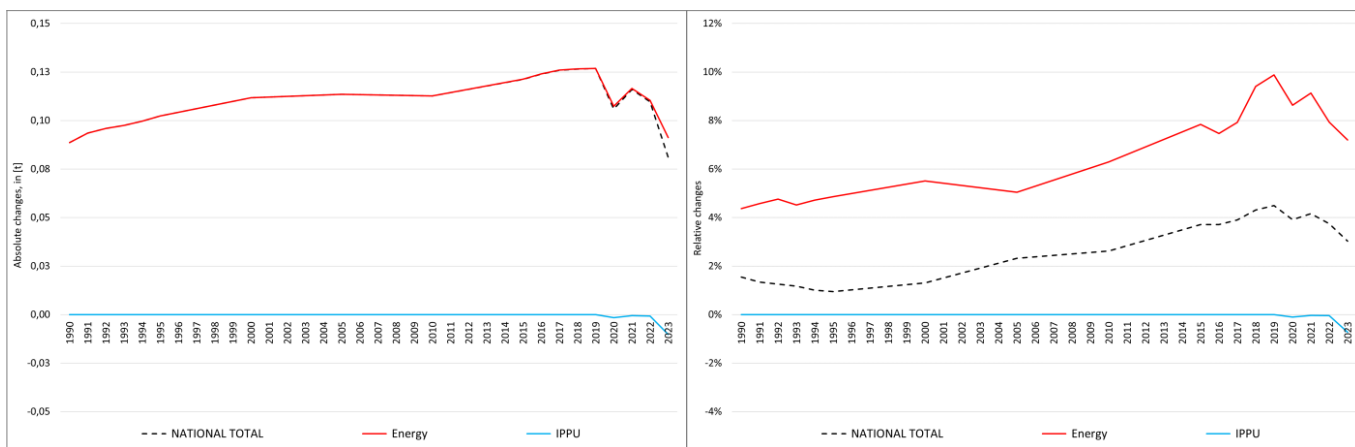


pollutant-specific data:	NOx	NMVOc	Sox	NH3	PM2.5	PM10	TSP	BC	CO	Pb	Cd	Hg	As	Cr	Cu	Ni	Se	Zn	PCDD/F	B[a]P	B[b]F	B[k]F	I[x]P	PAH1-4	HCB	PCB

Recalculations - Selenium (Se)



With the marginal changes in NFRs **1.A.2.g vii**, **1.A.4.a ii** and **1.A.4.c ii** canceling each other out, the changes within the **National Total** reported for **1990 (+0.09 t or +1.55 %)** result entirely from a revision in **NFR 1.A.3.b vi**, also resembling the strongest percental change with **+38 %**.

Table 1: Changes of emission estimates for 1990

NFR Sector	Submission 2025	Submission 2026	Difference		Reasoning
	[t]		absolute	relative	
NATIONAL TOTAL	5.73	5.82	0.09	1.55%	see description and reasoning in: sub-category chapters
NFR 1 - Energy	2.03	2.12	0.09	4.37%	see description and reasoning in: sub-category chapters
1.A.2.g vii	0.00008395	0.00008395	0.00000001	0.01%	here
1.A.3.b vi	0.24	0.32	0.09	37.56%	here
1.A.4.a ii	0.000015586	0.000015581	-0.000000004	-0.03%	here
1.A.4.c ii	0.0066308	0.0066303	-0.0000005	-0.01%	here
NFR 2 - IPPU	3.52	3.52	0.00	0.00%	
NFR 3 - Agriculture	NA				
NFR 5 - Waste	0.03	0.03	0.00	0.00%	
NFR 6 - Other	NA				

The changes within the **National Total** reported for **2023 (+0.08 t or +3.03 %)** are dominated by a revision in **NFR 1.A.3.b vi with +0.09 t (+38 %)**.

However, the **strongest percental change** occurs for **NFR 1.A.4.a ii with +38.5 %**.

Table 2: Changes of emission estimates for 2023

NFR Sector	Submission 2025	Submission 2026	Difference		Reasoning
	[t]		absolute	relative	
NATIONAL TOTAL	2.68	2.76	0.08	3.03%	see description and reasoning in: sub-category chapters
NFR 1 - Energy	1.27	1.36	0.09	7.20%	see description and reasoning in: sub-category chapters
1.A.1.a	0.0638	0.0640	0.0002	0.29%	here
1.A.1.b	0.809	0.814	0.005	0.68%	here
1.A.2.g vii	0.000079	0.000093	0.000013	16.50%	here
1.A.2.g viii	0.012	0.011	-0.002	-15.25%	here
1.A.3.a i(i)	0.0000000196	0.0000000201	0.0000000005	2.34%	here
1.A.3.a ii(i)	0.000000099	0.000000101	0.000000002	2.34%	here

	Submission 2025	Submission 2026	Difference		Reasoning
NFR Sector	[t]			relative	see description and reasoning in:
NATIONAL TOTAL	2.68	2.76	0.08	3.03%	sub-category chapters
NFR 1 - Energy	1.27	1.36	0.09	7.20%	sub-category chapters
1.A.3.b i	0.00455	0.00454	-0.00001	-0.16%	here
1.A.3.b ii	0.000433	0.000429	-0.000004	-1.02%	here
1.A.3.b iii	0.00127	0.00126	-0.00001	-0.79%	here
1.A.3.b iv	0.0000763	0.0000757	-0.0000006	-0.84%	here
1.A.3.b vi	0.34	0.43	0.09	26.13%	here
1.A.3.c	0.0023388	0.0023380	-0.0000009	-0.04%	here
1.A.3.d ii	0.0220	0.0217	-0.0003	-1.24%	here
1.A.4.a ii	0.000010	0.000014	0.000004	38.53%	here
1.A.4.b ii	0.00138	0.00131	-0.00006	-4.72%	here
1.A.4.c ii	0.007	0.005	-0.002	-24.34%	here
1.A.5.b	0.0003250	0.0003248	-0.0000002	-0.05%	here
NFR 2 - IPPU	1.409	1.399	-0.010	-0.72%	sub-category chapters
2.A.3	1.202	1.191	-0.011	-0.91%	here
2.G	0.206	0.207	0.001	0.39%	here
NFR 3 - Agriculture	NA				
NFR 5 - Waste	NA				
NFR 6 - Other	NA				