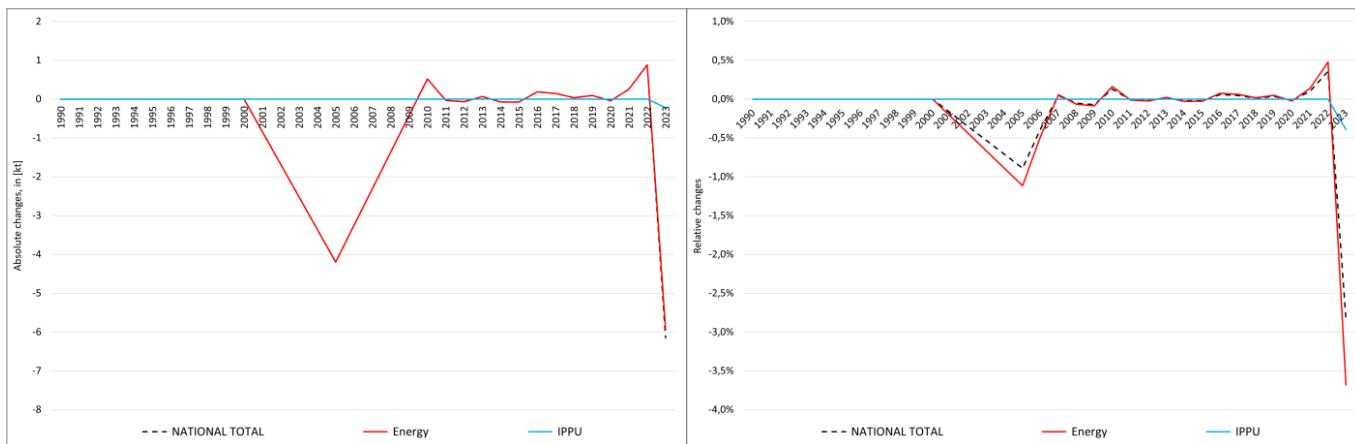


pollutant-specific data:	NOx	NM VOC	SOx	NH3	PM2.5	PM10	TSP	BC	CO	Pb	Cd	Hg	As	Cr	Cu	Ni	Se	Zn	PCDD/F	B[a]P	B[b]F	B[k]F	I[x]P	PAH1-4	HCB	PCB

# Recalculations - Sulphur Oxides



The **National Total** reported for **1990** remains unaffected by negligibly small changes within three sub-categories of NFR 1 and, thus, unaltered compared to the previous submission.

Table 1: Changes in emission estimates for 1990

	Submission 2025	Submission 2026	Difference		Reasoning
NFR Sector	[kt]		absolute	relative	see description and reasoning in:
<b>NATIONAL TOTAL</b>	<b>5.460,81</b>	<b>5.460,81</b>	<b>0,00</b>	<b>0,00%</b>	<b>sub-category chapters</b>
<b>NFR 1 - Energy</b>	<b>5.284,38</b>	<b>5.284,38</b>	<b>0,00</b>	<b>0,00%</b>	<b>sub-category chapters</b>
1.A.2.g vii	2,6625	2,6627	0,0002	0,01%	<a href="#">here</a>
1.A.4.a ii	0,5342	0,5341	-0,0001	-0,03%	<a href="#">here</a>
1.A.4.c ii	5,75770	5,75766	-0,00005	-0,001%	<a href="#">here</a>
<b>NFR 2 - IPPU</b>	<b>176,39</b>	<b>176,39</b>	<b>0,00</b>	<b>0,00%</b>	
<b>NFR 3 - Agriculture</b>	<b>NA</b>				
<b>NFR 5 - Waste</b>	<b>0,03</b>	<b>0,03</b>	<b>0,00</b>	<b>0,00%</b>	
<b>NFR 6 - Other</b>	<b>NA</b>				

Changes in the **National Total** reported for **2023 ( -6.15 kt or -2.84 %)** are dominated by interconnected revisions in NFR sub-categories **1.A.1.b** (-1.84 kt), **1.A.2.g viii** (-2.22 kt), and **1.A.4.b i** (-1.15 kt), together with a variety of more or less significant changes throughout NFRs 1 and 2.

The most significant percental change occurs for **NFR 1.A.5.a with minus 48.14 %**.

Table 2: Changes in emission estimates for 2023

	Submission 2025	Submission 2026	Difference		Reasoning
NFR Sector	[kt]		absolute	relative	see description and reasoning in:
<b>NATIONAL TOTAL</b>	<b>216,62</b>	<b>210,47</b>	<b>-6,15</b>	<b>-2,84%</b>	<b>sub-category chapters</b>
<b>NFR 1 - Energy</b>	<b>161,04</b>	<b>155,11</b>	<b>-5,93</b>	<b>-3,68%</b>	<b>sub-category chapters</b>
1.A.1.a	69,01	68,62	-0,39	-0,56%	<a href="#">here</a>
1.A.1.b	42,43	40,59	<u>-1,84</u>	-4,34%	<a href="#">here</a>
1.A.1.c	5,25	5,45	0,21	3,94%	<a href="#">here</a>
1.A.2.a	4,62	4,37	-0,26	-5,57%	<a href="#">here</a>
1.A.2.b	0,397	0,408	0,01	2,88%	<a href="#">here</a>
1.A.2.e	0,91	0,71	-0,20	-21,85%	<a href="#">here</a>
1.A.2.g vii	0,010	0,013	0,003	25,08%	<a href="#">here</a>

	Submission 2025	Submission 2026	Difference		Reasoning
NFR Sector	[kt]			relative	see description and reasoning in:
<b>NATIONAL TOTAL</b>	<b>216,62</b>	<b>210,47</b>	<b>-6,15</b>	<b>-2,84%</b>	<b>sub-category chapters</b>
<b>NFR 1 - Energy</b>	<b>161,04</b>	<b>155,11</b>	<b>-5,93</b>	<b>-3,68%</b>	<b>sub-category chapters</b>
1.A.2.g viii	16,05	13,92	-2,12	-13,22%	<a href="#">here</a>
1.A.3.b i	0,4763	0,4756	-0,0007	-0,14%	<a href="#">here</a>
1.A.3.b ii	0,0663	0,0656	-0,0007	-1,00%	<a href="#">here</a>
1.A.3.b iii	0,2039	0,2025	-0,0014	-0,70%	<a href="#">here</a>
1.A.3.b iv	0,0062	0,0061	-0,0001	-0,84%	<a href="#">here</a>
1.A.3.d ii	0,310	0,308	-0,002	-0,56%	<a href="#">here</a>
1.A.4.a i	1,73	1,47	-0,26	-14,99%	<a href="#">here</a>
1.A.4.a ii	0,003	0,004	0,001	19,26%	<a href="#">here</a>
1.A.4.b i	11,39	10,24	-1,15	-10,08%	<a href="#">here</a>
1.A.4.b ii	0,0013	0,0012	-0,0001	-4,82%	<a href="#">here</a>
1.A.4.c i	2,02	1,94	-0,08	-3,73%	<a href="#">here</a>
1.A.4.c ii	0,032	0,028	-0,004	-12,81%	<a href="#">here</a>
1.A.5.a	0,028	0,015	-0,014	-48,14%	<a href="#">here</a>
1.A.5.b	0,022	0,024	0,002	10,78%	<a href="#">here</a>
1.B.1.b	0,70	0,87	0,17	24,48%	<a href="#">here</a>
1.B.2.a iv	3,83	3,82	-0,01	-0,27%	
1.B.2.c	0,76	0,75	-0,01	-0,99%	
<b>NFR 2 - IPPU</b>	<b>55,48</b>	<b>55,26</b>	<b>-0,22</b>	<b>-0,39%</b>	<b>sub-category chapters</b>
2.A.3	7,00	6,95	-0,05	-0,70%	<a href="#">here</a>
2.B.6	0,72	0,55	-0,17	-23,48%	<a href="#">here</a>
<b>NFR 3 - Agriculture</b>	<b>NA</b>				
<b>NFR 5 - Waste</b>	<b>0,10</b>	<b>0,10</b>	<b>0,00</b>	<b>0,00%</b>	
<b>NFR 6 - Other</b>	<b>NA</b>				