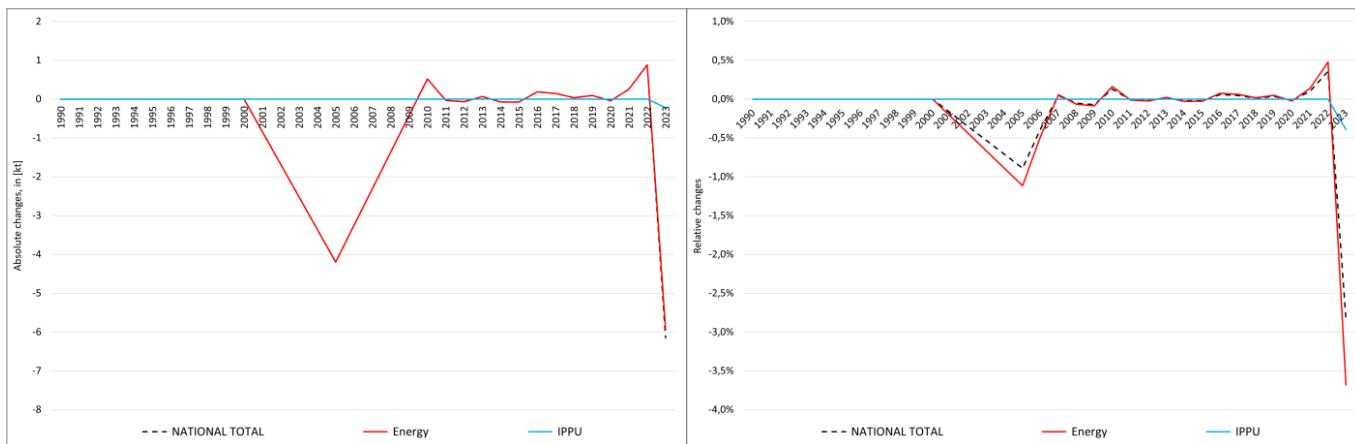


pollutant-specific data:	NOx	NM VOC	SOx	NH3	PM2.5	PM10	TSP	BC	CO	Pb	Cd	Hg	As	Cr	Cu	Ni	Se	Zn	PCDD/F	B[a]P	B[b]F	B[k]F	I[x]P	PAH1-4	HCB	PCB

# Recalculations - Sulphur Oxides



The **National Total** reported for **1990** remains unaffected by negligibly small changes within three sub-categories of NFR 1 and, thus, unaltered compared to the previous submission.

Table 1: Changes in emission estimates for 1990

	Submission 2025	Submission 2026	Difference		Reasoning
NFR Sector	[kt]		absolute	relative	see description and reasoning in:
<b>NATIONAL TOTAL</b>	<b>5,460.81</b>	<b>5,460.81</b>	<b>0.00</b>	<b>0.00%</b>	<b>sub-category chapters</b>
<b>NFR 1 - Energy</b>	<b>5,284.38</b>	<b>5,284.38</b>	<b>0.00</b>	<b>0.00%</b>	<b>sub-category chapters</b>
1.A.2.g vii	2.6625	2.6627	0.0002	0.01%	<a href="#">here</a>
1.A.4.a ii	0.5342	0.5341	-0.0001	-0.03%	<a href="#">here</a>
1.A.4.c ii	5.75770	5.75766	-0.00005	-0.001%	<a href="#">here</a>
<b>NFR 2 - IPPU</b>	<b>176.39</b>	<b>176.39</b>	<b>0.00</b>	<b>0.00%</b>	
<b>NFR 3 - Agriculture</b>	<b>NA</b>				
<b>NFR 5 - Waste</b>	<b>0.03</b>	<b>0.03</b>	<b>0.00</b>	<b>0.00%</b>	
<b>NFR 6 - Other</b>	<b>NA</b>				

Changes in the **National Total** reported for **2023** (**-6.15 kt or -2.84 %**) are dominated by interconnected revisions in NFR sub-categories **1.A.1.b** (-1.84 kt), **1.A.2.g viii** (-2.22 kt), and **1.A.4.b i** (-1.15 kt), together with a variety of more or less significant changes throughout NFRs 1 and 2.

The most significant percental change occurs for **NFR 1.A.5.a with minus 48.14 %**.

Table 2: Changes in emission estimates for 2023

	Submission 2025	Submission 2026	Difference		Reasoning
NFR Sector	[kt]		absolute	relative	see description and reasoning in:
<b>NATIONAL TOTAL</b>	<b>216.62</b>	<b>210.47</b>	<b>-6.15</b>	<b>-2.84%</b>	<b>sub-category chapters</b>
<b>NFR 1 - Energy</b>	<b>161.04</b>	<b>155.11</b>	<b>-5.93</b>	<b>-3.68%</b>	<b>sub-category chapters</b>
1.A.1.a	69.01	68.62	-0.39	-0.56%	<a href="#">here</a>
1.A.1.b	42.43	40.59	-1.84	-4.34%	<a href="#">here</a>
1.A.1.c	5.25	5.45	0.21	3.94%	<a href="#">here</a>
1.A.2.a	4.62	4.37	-0.26	-5.57%	<a href="#">here</a>
1.A.2.b	0.397	0.408	0.01	2.88%	<a href="#">here</a>
1.A.2.e	0.91	0.71	-0.20	-21.85%	<a href="#">here</a>
1.A.2.g vii	0.010	0.013	0.003	25.08%	<a href="#">here</a>

	Submission 2025	Submission 2026	Difference		Reasoning
NFR Sector	[kt]			relative	see description and reasoning in:
<b>NATIONAL TOTAL</b>	<b>216.62</b>	<b>210.47</b>	<b>-6.15</b>	<b>-2.84%</b>	<b>sub-category chapters</b>
<b>NFR 1 - Energy</b>	<b>161.04</b>	<b>155.11</b>	<b>-5.93</b>	<b>-3.68%</b>	<b>sub-category chapters</b>
1.A.2.g viii	16.05	13.92	-2.12	-13.22%	<a href="#">here</a>
1.A.3.b i	0.4763	0.4756	-0.0007	-0.14%	<a href="#">here</a>
1.A.3.b ii	0.0663	0.0656	-0.0007	-1.00%	<a href="#">here</a>
1.A.3.b iii	0.2039	0.2025	-0.0014	-0.70%	<a href="#">here</a>
1.A.3.b iv	0.0062	0.0061	-0.0001	-0.84%	<a href="#">here</a>
1.A.3.d ii	0.310	0.308	-0.002	-0.56%	<a href="#">here</a>
1.A.4.a i	1.73	1.47	-0.26	-14.99%	<a href="#">here</a>
1.A.4.a ii	0.003	0.004	0.001	19.26%	<a href="#">here</a>
1.A.4.b i	11.39	10.24	-1.15	-10.08%	<a href="#">here</a>
1.A.4.b ii	0.0013	0.0012	-0.0001	-4.82%	<a href="#">here</a>
1.A.4.c i	2.02	1.94	-0.08	-3.73%	<a href="#">here</a>
1.A.4.c ii	0.032	0.028	-0.004	-12.81%	<a href="#">here</a>
1.A.5.a	0.028	0.015	-0.014	-48.14%	<a href="#">here</a>
1.A.5.b	0.022	0.024	0.002	10.78%	<a href="#">here</a>
1.B.1.b	0.70	0.87	0.17	24.48%	<a href="#">here</a>
1.B.2.a iv	3.83	3.82	-0.01	-0.27%	
1.B.2.c	0.76	0.75	-0.01	-0.99%	
<b>NFR 2 - IPPU</b>	<b>55.48</b>	<b>55.26</b>	<b>-0.22</b>	<b>-0.39%</b>	<b>sub-category chapters</b>
2.A.3	7.00	6.95	-0.05	-0.70%	<a href="#">here</a>
2.B.6	0.72	0.55	-0.17	-23.48%	<a href="#">here</a>
<b>NFR 3 - Agriculture</b>	<b>NA</b>				
<b>NFR 5 - Waste</b>	<b>0.10</b>	<b>0.10</b>	<b>0.00</b>	<b>0.00%</b>	
<b>NFR 6 - Other</b>	<b>NA</b>				