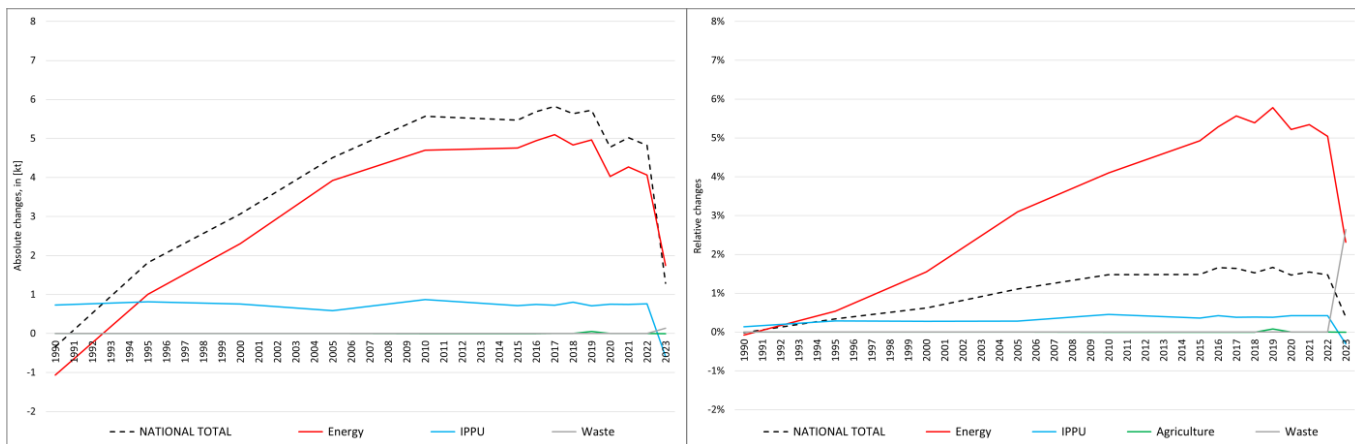


**pollutant-specific data:** NOx NMVOC SOx NH3 PM2.5 PM10 TSP BC CO Pb Cd Hg As Cr Cu Ni Se Zn PCDD/F B[a]P B[b]F B[k]F I(x)P PAH1-4 HCB PCB

# Recalculations - Total Suspended Particles (TSP)



The marginal changes within the **National Total** reported for **1990 (-0.34 kt or -0.02 %)** are dominated by two opposing revision in NFRs sub-categories **1.A.3.b vi (+3.56 kt)** and **1.A.3.d ii (-4.45 kt)** together with less significant revisions in NFRs 1 and 3. Here, TSP emissions from **2.D.3.c (0.73 kt)** are reported for the first time.

The strongest percental changes occur for NFRs **1.A.4.c iii with -83 %** and **1.A.3.d ii with minus 62 %**.

Table 1: Changes in emission estimates for 1990

NFR Sector	Submission 2025	Submission 2026	Difference		Reasoning
	[kt]		absolute	relative	
<b>NATIONAL TOTAL</b>	<b>2.015,59</b>	<b>2.015,25</b>	<b>-0,34</b>	<b>-0,02%</b>	<b>see description and reasoning in: sub-category chapters</b>
<b>NFR 1 - Energy</b>	<b>1.391,90</b>	<b>1.390,84</b>	<b>-1,07</b>	<b>-0,08%</b>	<b>sub-category chapters</b>
1.A.3.b vi	12,67	16,23	3,56	28,09%	<a href="#">here</a>
1.A.3.b vii	10,80	10,88	0,09	0,79%	<a href="#">here</a>
1.A.3.d ii	7,17	2,71	-4,45	-62,14%	<a href="#">here</a>
1.A.4.a ii	1,30	1,30	0,00	-0,03%	<a href="#">here</a>
1.A.4.c iii	0,11	0,02	-0,09	-83,13%	<a href="#">here</a>
1.A.5.b	2,82	2,65	-0,17	-5,87%	<a href="#">here</a>
<b>NFR 2 - IPPU</b>	<b>543,41</b>	<b>544,14</b>	<b>0,73</b>	<b>0,13%</b>	<b>sub-category chapters</b>
2.D.3.c	NE	0,73	0,73		<a href="#">here</a>
<b>NFR 3 - Agriculture</b>	<b>75,24</b>	<b>75,24</b>	<b>0,00</b>	<b>0,00%</b>	<b>sub-category chapters</b>
<b>NFR 5 - Waste</b>	<b>5,04</b>	<b>5,04</b>	<b>0,00</b>	<b>0,00%</b>	
<b>NFR 6 - Other</b>		<b>NA</b>			

The rather small changes within the **National Total** reported for **2023 (+1.29 kt or +0.39 %)** are dominated by revisions in NFR sub-categories **1.A.3.b vi (+3.10 kt)** and **2.A.5.a (-1.35 kt)** together with less significant revisions in NFRs 1, 2 and 3.

Here, TSP emissions from **2.D.3.c (0.53 kt)** are reported for the first time.

The strongest percental changes occur for NFRs **1.A.4.a ii with plus 37 %** and **1.A.2.g vii with plus 32 %**.

Table 2: Changes in emission estimates for 2023

	Submission 2025	Submission 2026	Difference		Reasoning
NFR Sector	[kt]		relative	see description and reasoning in:	
<b>NATIONAL TOTAL</b>	<b>333,541</b>	<b>334,831</b>	<b>1,29</b>	<b>0,39%</b>	<b>sub-category chapters</b>
<b>NFR 1 - Energy</b>	<b>75,429</b>	<b>77,173</b>	<b>1,74</b>	<b>2,31%</b>	<b>sub-category chapters</b>
1.A.1.a	3,57	3,61	0,04	1,11%	<a href="#">here</a>
1.A.1.b	0,74	0,71	-0,03	-3,92%	<a href="#">here</a>
1.A.1.c	0,3615	0,3814	0,02	5,51%	<a href="#">here</a>
1.A.2.a	0,074	0,068	-0,01	-7,96%	<a href="#">here</a>
1.A.2.g vii	0,27	0,36	0,09	31,97%	<a href="#">here</a>
1.A.2.g viii	2,27	2,24	-0,03	-1,41%	<a href="#">here</a>
1.A.3.a ii(i)	0,01183	0,01186	0,00002	0,18%	<a href="#">here</a>
1.A.3.b i	1,708	1,705	-0,003	-0,20%	<a href="#">here</a>
1.A.3.b ii	1,190	1,178	-0,01	-1,00%	<a href="#">here</a>
1.A.3.b iii	0,848	0,847	-0,001	-0,10%	<a href="#">here</a>
1.A.3.b iv	0,864	0,857	-0,007	-0,83%	<a href="#">here</a>
1.A.3.b vi	18,47	21,57	3,10	16,81%	<a href="#">here</a>
1.A.3.b vii	15,51	14,84	-0,66	-4,28%	<a href="#">here</a>
1.A.3.d ii	0,7380	0,6875	-0,05	-6,84%	<a href="#">here</a>
1.A.4.a i	2,46	2,32	-0,14	-5,75%	<a href="#">here</a>
1.A.4.a ii	0,105	0,145	0,04	37,33%	<a href="#">here</a>
1.A.4.b i	15,02	14,97	-0,04	-0,30%	<a href="#">here</a>
1.A.4.b ii	0,104	0,099	-0,005	-4,71%	<a href="#">here</a>
1.A.4.c i	0,488	0,487	-0,001	-0,25%	<a href="#">here</a>
1.A.4.c ii	3,49	2,97	-0,52	-14,90%	<a href="#">here</a>
1.A.4.c iii	0,0092	0,0086	-0,0006	-6,54%	<a href="#">here</a>
1.A.5.a	0,047	0,051	0,004	8,68%	<a href="#">here</a>
1.A.5.b	0,08	0,09	0,01	6,59%	<a href="#">here</a>
1.B.1.b	0,56	0,52	-0,04	-6,83%	<a href="#">here</a>
<b>NFR 2 - IPPU</b>	<b>191,98</b>	<b>191,39</b>	<b>-0,59</b>	<b>-0,31%</b>	<b>sub-category chapters</b>
2.A.3	0,33	0,33	0,00	-0,14%	<a href="#">here</a>
2.A.5.a	34,87	33,53	-1,35	-3,87%	<a href="#">here</a>
2.C.2	0,0051	0,0052	0,0001	1,72%	<a href="#">here</a>
2.D.3.c	NE	0,53	0,53		<a href="#">here</a>
2.G	3,77	3,78	0,01	0,14%	<a href="#">here</a>
2.I	1,22	1,21	-0,01	-0,46%	<a href="#">here</a>
2.L	98,46	98,69	0,23	0,23%	<a href="#">here</a>
<b>NFR 3 - Agriculture</b>	<b>61,016</b>	<b>61,014</b>	<b>-0,002</b>	<b>-0,003%</b>	<b>sub-category chapters</b>
3.B.3	12,066	12,065	-0,002	-0,01%	<a href="#">here</a>
<b>NFR 5 - Waste</b>	<b>5,12</b>	<b>5,25</b>	<b>0,135</b>	<b>2,64%</b>	<b>sub-category chapters</b>
5.A	0,018	0,016	-0,003	-13,86%	<a href="#">here</a>
5.E	3,70	3,83	0,138	3,72%	<a href="#">here</a>
<b>NFR 6 - Other</b>	<b>NA</b>				