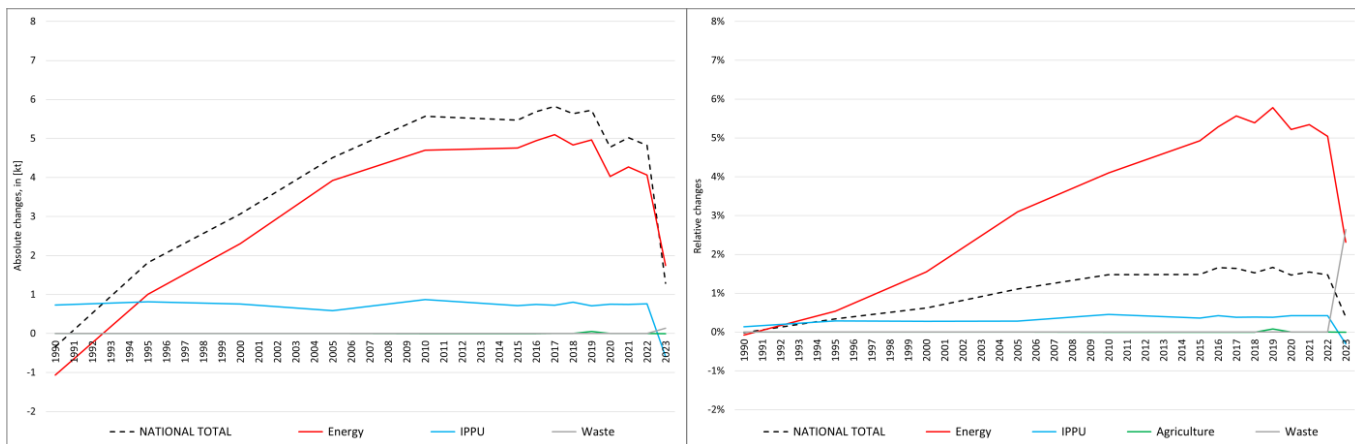


**pollutant-specific data:** NOx NMVOC SOx NH3 PM2.5 PM10 TSP BC CO Pb Cd Hg As Cr Cu Ni Se Zn PCDD/F B[a]P B[b]F B[k]F I(x)P PAH1-4 HCB PCB

# Recalculations - Total Suspended Particles (TSP)



The marginal changes within the **National Total** reported for **1990 (-0.34 kt or -0.02 %)** are dominated by two opposing revision in NFRs sub-categories **1.A.3.b vi (+3.56 kt)** and **1.A.3.d ii (-4.45 kt)** together with less significant revisions in NFRs 1 and 3. Here, TSP emissions from **2.D.3.c (0.73 kt)** are reported for the first time.

The strongest percental changes occur for NFRs **1.A.4.c iii with -83 %** and **1.A.3.d ii with minus 62 %**.

Table 1: Changes in emission estimates for 1990

NFR Sector	Submission 2025	Submission 2026	Difference		Reasoning
	[kt]		absolute	relative	
<b>NATIONAL TOTAL</b>	<b>2,015.59</b>	<b>2,015.25</b>	<b>-0.34</b>	<b>-0.02%</b>	see description and reasoning in: sub-category chapters
<b>NFR 1 - Energy</b>	<b>1,391.90</b>	<b>1,390.84</b>	<b>-1.07</b>	<b>-0.08%</b>	sub-category chapters
1.A.3.b vi	12.67	16.23	3.56	28.09%	<a href="#">here</a>
1.A.3.b vii	10.80	10.88	0.09	0.79%	<a href="#">here</a>
1.A.3.d ii	7.17	2.71	-4.45	-62.14%	<a href="#">here</a>
1.A.4.a ii	1.30	1.30	0.00	-0.03%	<a href="#">here</a>
1.A.4.c iii	0.11	0.02	-0.09	-83.13%	<a href="#">here</a>
1.A.5.b	2.82	2.65	-0.17	-5.87%	<a href="#">here</a>
<b>NFR 2 - IPPU</b>	<b>543.41</b>	<b>544.14</b>	<b>0.73</b>	<b>0.13%</b>	sub-category chapters
2.D.3.c	NE	0.73	0.73		<a href="#">here</a>
<b>NFR 3 - Agriculture</b>	<b>75.24</b>	<b>75.24</b>	<b>0.00</b>	<b>0.00%</b>	sub-category chapters
<b>NFR 5 - Waste</b>	<b>5.04</b>	<b>5.04</b>	<b>0.00</b>	<b>0.00%</b>	
<b>NFR 6 - Other</b>		<b>NA</b>			

The rather small changes within the **National Total** reported for **2023 (+1.29 kt or +0.39 %)** are dominated by revisions in NFR sub-categories **1.A.3.b vi (+3.10 kt)** and **2.A.5.a (-1.35 kt)** together with less significant revisions in NFRs 1, 2 and 3.

Here, TSP emissions from **2.D.3.c (0.53 kt)** are reported for the first time.

The strongest percental changes occur for NFRs **1.A.4.a ii with plus 37 %** and **1.A.2.g vii with plus 32 %**.

Table 2: Changes in emission estimates for 2023

	Submission 2025	Submission 2026	Difference		Reasoning
NFR Sector	[kt]		relative	see description and reasoning in:	
<b>NATIONAL TOTAL</b>	<b>333.541</b>	<b>334.831</b>	<b>1.29</b>	<b>0.39%</b>	<b>sub-category chapters</b>
<b>NFR 1 - Energy</b>	<b>75.429</b>	<b>77.173</b>	<b>1.74</b>	<b>2.31%</b>	<b>sub-category chapters</b>
1.A.1.a	3.57	3.61	0.04	1.11%	<a href="#">here</a>
1.A.1.b	0.74	0.71	-0.03	-3.92%	<a href="#">here</a>
1.A.1.c	0.3615	0.3814	0.02	5.51%	<a href="#">here</a>
1.A.2.a	0.074	0.068	-0.01	-7.96%	<a href="#">here</a>
1.A.2.g vii	0.27	0.36	0.09	31.97%	<a href="#">here</a>
1.A.2.g viii	2.27	2.24	-0.03	-1.41%	<a href="#">here</a>
1.A.3.a ii(i)	0.01183	0.01186	0.00002	0.18%	<a href="#">here</a>
1.A.3.b i	1.708	1.705	-0.003	-0.20%	<a href="#">here</a>
1.A.3.b ii	1.190	1.178	-0.01	-1.00%	<a href="#">here</a>
1.A.3.b iii	0.848	0.847	-0.001	-0.10%	<a href="#">here</a>
1.A.3.b iv	0.864	0.857	-0.007	-0.83%	<a href="#">here</a>
1.A.3.b vi	18.47	21.57	3.10	16.81%	<a href="#">here</a>
1.A.3.b vii	15.51	14.84	-0.66	-4.28%	<a href="#">here</a>
1.A.3.d ii	0.7380	0.6875	-0.05	-6.84%	<a href="#">here</a>
1.A.4.a i	2.46	2.32	-0.14	-5.75%	<a href="#">here</a>
1.A.4.a ii	0.105	0.145	0.04	37.33%	<a href="#">here</a>
1.A.4.b i	15.02	14.97	-0.04	-0.30%	<a href="#">here</a>
1.A.4.b ii	0.104	0.099	-0.005	-4.71%	<a href="#">here</a>
1.A.4.c i	0.488	0.487	-0.001	-0.25%	<a href="#">here</a>
1.A.4.c ii	3.49	2.97	-0.52	-14.90%	<a href="#">here</a>
1.A.4.c iii	0.0092	0.0086	-0.0006	-6.54%	<a href="#">here</a>
1.A.5.a	0.047	0.051	0.004	8.68%	<a href="#">here</a>
1.A.5.b	0.08	0.09	0.01	6.59%	<a href="#">here</a>
1.B.1.b	0.56	0.52	-0.04	-6.83%	<a href="#">here</a>
<b>NFR 2 - IPPU</b>	<b>191.98</b>	<b>191.39</b>	<b>-0.59</b>	<b>-0.31%</b>	<b>sub-category chapters</b>
2.A.3	0.33	0.33	0.00	-0.14%	<a href="#">here</a>
2.A.5.a	34.87	33.53	-1.35	-3.87%	<a href="#">here</a>
2.C.2	0.0051	0.0052	0.0001	1.72%	<a href="#">here</a>
2.D.3.c	NE	0.53	0.53		<a href="#">here</a>
2.G	3.77	3.78	0.01	0.14%	<a href="#">here</a>
2.I	1.22	1.21	-0.01	-0.46%	<a href="#">here</a>
2.L	98.46	98.69	0.23	0.23%	<a href="#">here</a>
<b>NFR 3 - Agriculture</b>	<b>61.016</b>	<b>61.014</b>	<b>-0.002</b>	<b>-0.003%</b>	<b>sub-category chapters</b>
3.B.3	12.066	12.065	-0.002	-0.01%	<a href="#">here</a>
<b>NFR 5 - Waste</b>	<b>5.12</b>	<b>5.25</b>	<b>0.135</b>	<b>2.64%</b>	<b>sub-category chapters</b>
5.A	0.018	0.016	-0.003	-13.86%	<a href="#">here</a>
5.E	3.70	3.83	0.138	3.72%	<a href="#">here</a>
<b>NFR 6 - Other</b>	<b>NA</b>				