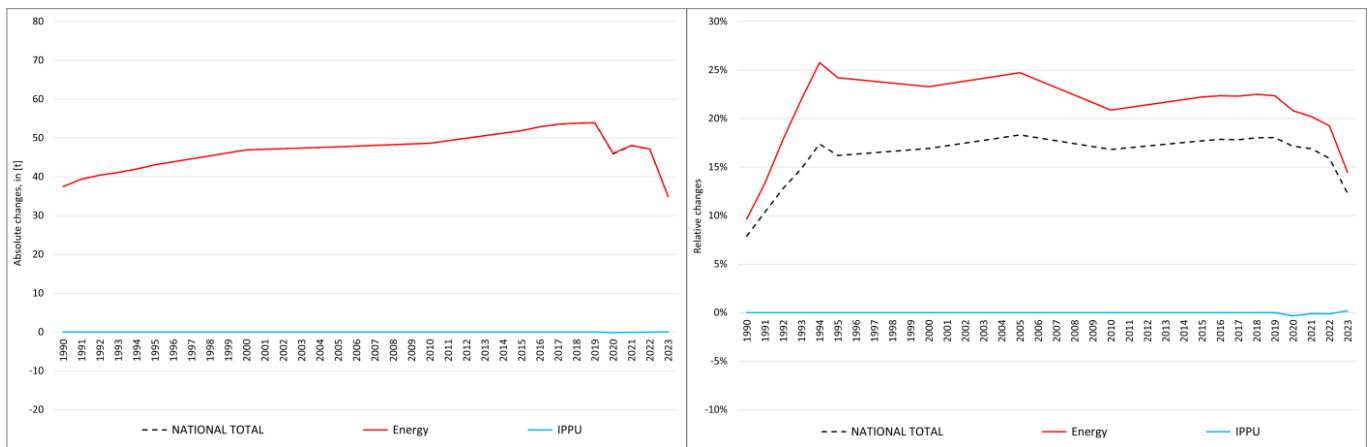


pollutant-specific data:	NOx	NMVOc	SOx	NH3	PM2.5	PM10	TSP	BC	CO	Pb	Cd	Hg	As	Cr	Cu	Ni	Se	Zn	PCDD/F	B[a]P	B[b]F	B[k]F	I[x]P	PAH1-4	HCB	PCB

Recalculations - Zinc (Zn)



With the marginal changes in NFRs **1.A.2.g vii**, **1.A.4.a ii** and **1.A.4.c ii** canceling each other out, the remarkable changes within the **National Total** reported for **1990 (+37.4 t or +7.89 %)** result entirely from a revision in **NFR 1.A.3.b vi**, also resembling the strongest percental change with **+40 %**.

Table 1: Changes of emission estimates for 1990

NFR Sector	Submission 2025	Submission 2026	Difference		Reasoning
	[t]		absolute	relative	
NATIONAL TOTAL	474.15	511.59	37.43	7.89%	see description and reasoning in: sub-category chapters
NFR 1 - Energy	387.46	424.90	37.43	9.66%	sub-category chapters
1.A.2.g vii	0.015013	0.015014	0.000001	0.01%	here
1.A.3.b vi	94.21	131.64	37.43	39.74%	here
1.A.4.a ii	0.002805	0.002805	-0.000001	-0.03%	here
1.A.4.c ii	0.67198	0.67193	-0.00005	-0.01%	here
NFR 2 - IPPU	3.52	3.52	0.00	0.00%	
NFR 3 - Agriculture	NA				
NFR 5 - Waste	0.03	0.03	0.00	0.00%	
NFR 6 - Other	NA				

The substantial changes within the **National Total** reported for **2023 (+35 t or +12.3 %)** are dominated by a revision in **NFR 1.A.3.b vi with +38 t (+27.9 %)**.

However, the **strongest percental change** occurs for **NFR 1.A.4.a ii with +38.5 %**.

Table 2: Changes of emission estimates for 2023

NFR Sector	Submission 2025	Submission 2026	Difference		Reasoning
	[t]		absolute	relative	
NATIONAL TOTAL	284.64	319.57	34.93	12.27%	see description and reasoning in: sub-category chapters
NFR 1 - Energy	241.49	276.34	34.85	14.43%	sub-category chapters
1.A.1.a	3.853	3.857	0.003	0.09%	here
1.A.1.b	3.48	3.53	0.05	1.38%	here
1.A.1.c	0.029	0.033	0.004	13.67%	here
1.A.2.g vii	0.014	0.016	0.002	17.74%	here
1.A.2.g viii	0.36	0.30	-0.06	-15.31%	here
1.A.3.a i(i)	0.00000032	0.00000033	0.00000001	2.34%	here

	Submission 2025	Submission 2026	Difference		Reasoning
NFR Sector	[t]			relative	see description and reasoning in:
NATIONAL TOTAL	284.64	319.57	34.93	12.27%	sub-category chapters
NFR 1 - Energy	241.49	276.34	34.85	14.43%	sub-category chapters
1.A.3.a ii(i)	0.0000164	0.0000167	0.0000004	2.34%	here
1.A.3.b i	0.772	0.771	-0.001	-0.16%	here
1.A.3.b ii	0.078	0.077	-0.001	-1.02%	here
1.A.3.b iii	0.230	0.228	-0.002	-0.79%	here
1.A.3.b iv	0.0126	0.0125	-0.0001	-0.84%	here
1.A.3.b vi	136.65	174.71	38.07	27.86%	here
1.A.3.b vii	1.3109	1.2279	-0.08	-6.33%	here
1.A.3.c	0.2400	0.2399	-0.0001	-0.04%	here
1.A.3.d ii	0.46	0.45	-0.01	-2.32%	here
1.A.4.a i	37.04	34.29	-2.75	-7.42%	here
1.A.4.a ii	0.0018	0.0025	0.0007	38.53%	here
1.A.4.b i	54.84	54.64	-0.20	-0.37%	here
1.A.4.b ii	0.14	0.13	-0.01	-4.72%	here
1.A.4.c ii	0.67	0.51	-0.16	-24.06%	here
1.A.5.b	0.00555	0.00552	-0.00003	-0.53%	here
NFR 2 - IPPU	43.15	43.23	0.08	0.19%	sub-category chapters
2.G	29.23	29.31	0.08	0.27%	here
NFR 3 - Agriculture	NA				
NFR 5 - Waste	NA				
NFR 6 - Other	NA				